



ACCESSORIES



주식회사 플루마

Fluma Co., Ltd.

HYDRAULIC, PNEUMATIC AND ELECTRIC TECHNOLOGY

GENERAL & CONSTRUCTION OF SAFETY BLOCK FOR ACCUMULATORS

ACCUMULATOR용 SAFETY BLOCK - 개요 및 구조

GENERAL OF SAFETY BLOCK FOR ACCUMULATOR

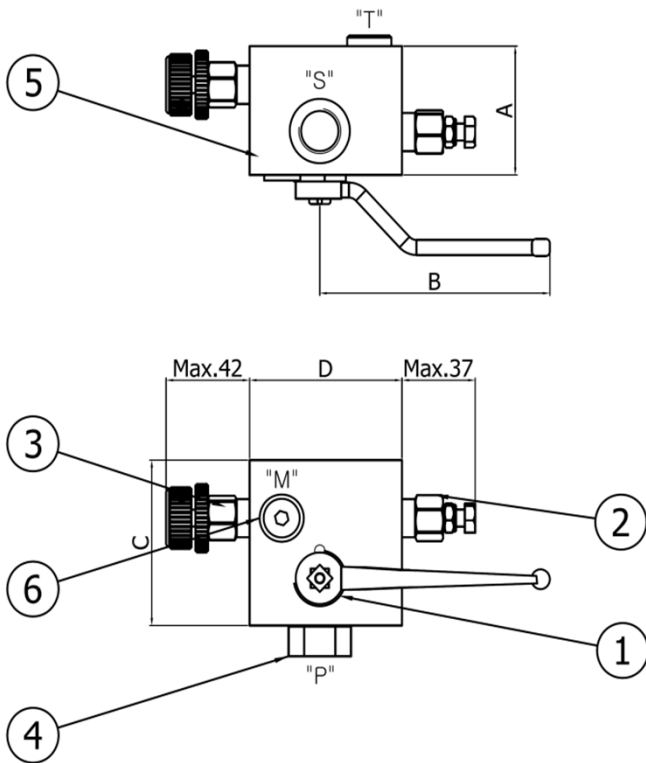
ACCUMULATOR용 SAFETY BLOCK - 개요

Safety block series SV combine in a compact unit all the components required for an easy connection of accumulators on an hydraulic circuit and its protection from overpressure. They also allow a quick disassembly of the bladder accumulator or a check of bladder accumulator pre-charge pressure also when the system is operating. Series SV is suitable for bladder accumulators from 0.7 liters up to 60 liters.

SV시리즈 Safety block은 초과된 압력으로 부터 유압라인의 accumulators 를 보호하고, 장착이 필요한 모든 부품에 쉽게 조립이 가능하다. 또한 시스템 가동 될 때 초기 충전 압력을 확인하거나, accumulators로부터 탈부착이 용이하다. SV시리즈는 0.7 liter 에서 60 liter까지의 accumulators 에 적용이 가능하다.

CONSTRUCTION OF SAFETY BLOCK FOR BLADDER ACCUMULATOR

BLADDER ACCUMULATOR용 SAFETY BLOCK - 구조



NO	Description
1	Main stop valve
2	Relief valve
3	By-pass valve
4	Adapter
5	Safety block
6	Plug

NO	A(mm)	B(mm)	C(mm)	D(mm)
SV 10	60	115	90	76
SV 20	73	168	100	87
SV 32	78	168	105	100

Technical data - 기술사양

NO	SPECIFICATION	SV 10	SV 20	SV 32
1	Port size	S port	PF 1/2	PF 1 1/4
2		P port	PF 1/2	PF 1 1/2
3		T port	PF 3/8	PF 1/2
4		M port	PF 1/4	PF 1/4
5	Max. Operating pressure	Max. 360 bar		
6	Temperature range	-20 °C ~ 80 °C		

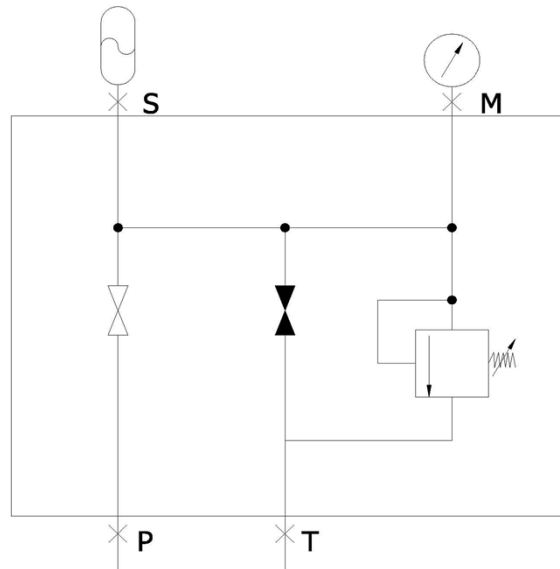
CIRCUIT FLOW & FLOW RATE OF SAFETY BLOCK FOR ACCUMULATORS
ACCUMULATORS용 흐름도 및 유량 특성곡선

Ordering code - 주문 코드

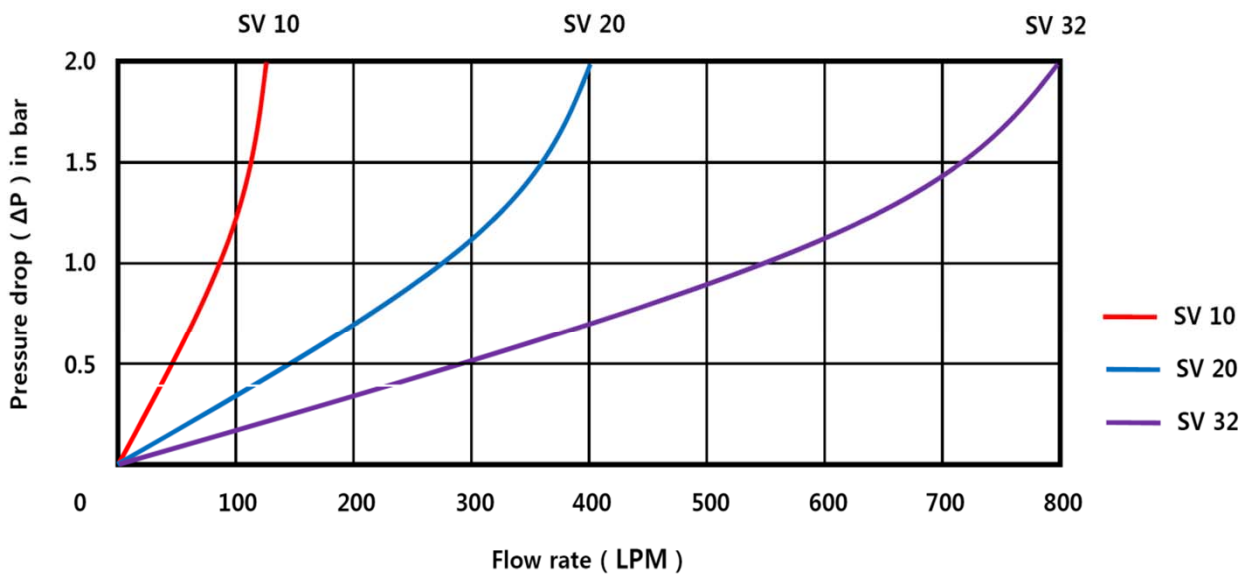
SV - 10 - Y

1 2 3

1	Type	SV
2	Connection to Accumulator (S port)	10 : 1/2" 20 : 1 " 32 : 1 1/2"
3	Relief valve	Y : With relief valve N : Without relief valve



CIRCUIT FLOW DIAGRAM



Pressure drop / flow rate through safety block

CLAMP BAND & SUPPORT RING SPECIFICATION FOR ACCUMULATORS
ACCUMULATOR용 CLAMP 및 SUPPORT RING

CLAMP BAND FOR BLADDER ACCUMULATOR

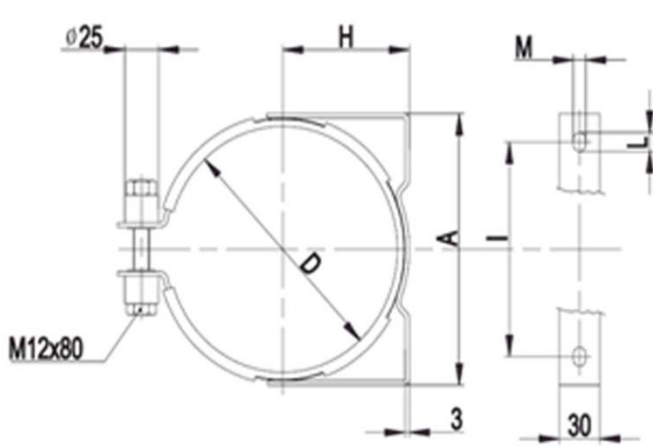


Fig. I : For Low capacity volume - 1

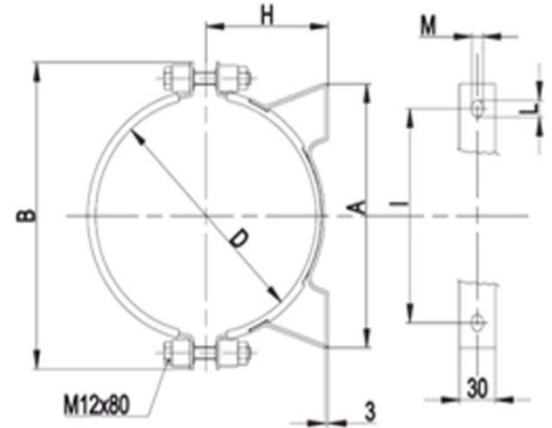


Fig. II : For Low capacity volume - 2

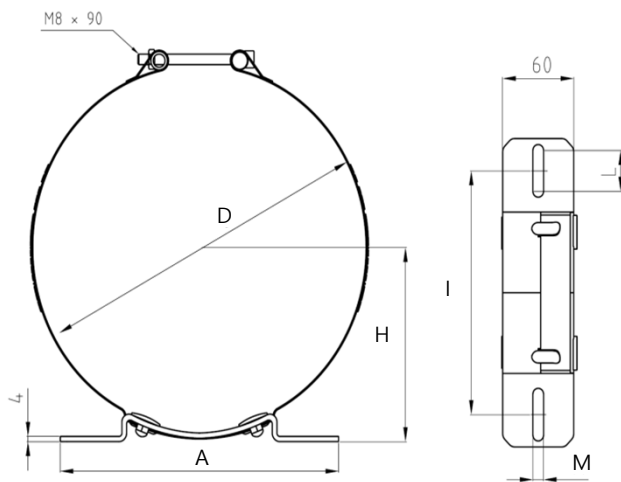
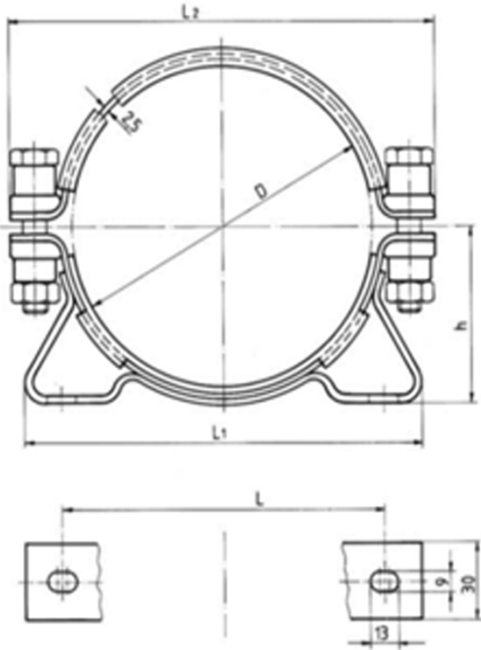


Fig. III : For High capacity volume

Item	Accumulator	Fig	Weight (Kg)	A	B	D	H	I	L	M
CB 90	BA 0.7	I	0.65	125	-	Φ89÷Φ93	53÷55	90	13	9
CB 120	BA 1 ~ 3	II	0.85	135	194	Φ114÷Φ122	66÷70	100	13	9
CB 170	BA 5	II	1.1	185	251	Φ167÷Φ176	95÷100	146	13	9
CB 230	BA 10 ~ 60	III	1.5	235	-	Φ230	145÷150	185	40	9

CLAMP BAND & SUPPORT RING SPECIFICATION FOR ACCUMULATORS ACCUMULATOR용 CLAMP 및 SUPPORT RING

CLAMP BAND FOR PISTON ACCUMULTOR



Accumulator	D	h	L	L1	L2	Order code
AK...-220-10	120	68	100	138	180	2967
AK...-800-10	167	92	148	184	227	2969
AK...-220-18	204	110	212	254	264	2970
AK...-375-18	215	115	216	254	275	2971
AK...-600-18	250	133	248	300	310	2975
AK...-220-25	280	148	248	300	340	2977
AK...-700-18	289	153	280	336	349	2978
AK...-350-25	308	162	280	336	368	2979
AK...-220-36	406	211	384	460	466	4237
AK...-350-36	419	217	384	460	479	2540

•In case of clamp band for pressure vessel, it can be used a CB230(bladder accumulator) clamp band.
(압력용기(pressure vessel)용 clamp band의 경우, bladder accumulator용 clamp band CB230을 사용 할 수 있다.)

CLAMP BAND FOR DIAPHRAGM ACCUMULTOR

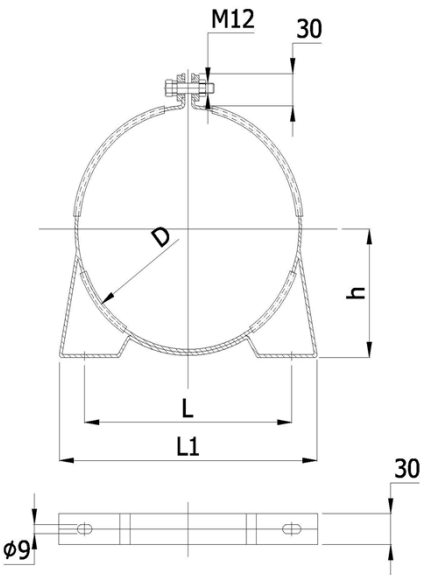


Fig. 1

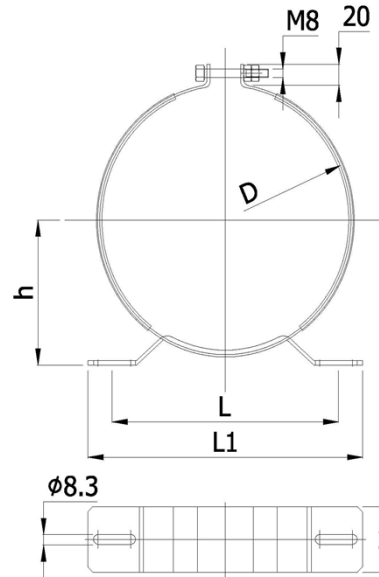


Fig. 2

Type	Weight(kg)	Fig	D	h	L	L1
MS 0.075	Thread fixing type(Clamp band 필요 없음)					
MS 0.16~0.25						
MS 0.32	0.75	I	94	56	105	125
MS 0.50	0.7	II	105	68	105	144
MS 0.75			123	78	125	158
MS 1.00			136	83	136	170
MS 1.40	1.0		147	88	143	175
MS 2.00 ~2.80			144			

CLAMP BAND & SUPPORT RING SPECIFICATION FOR ACCUMULATORS
 ACCUMULATOR용 CLAMP 및 SUPPORT RING

SUPPORT FOR BLADDER ACCUMULATOR

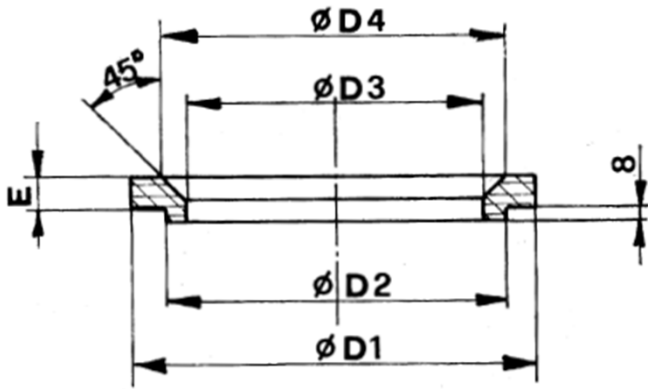


Fig. I : For Low capacity volume - 1

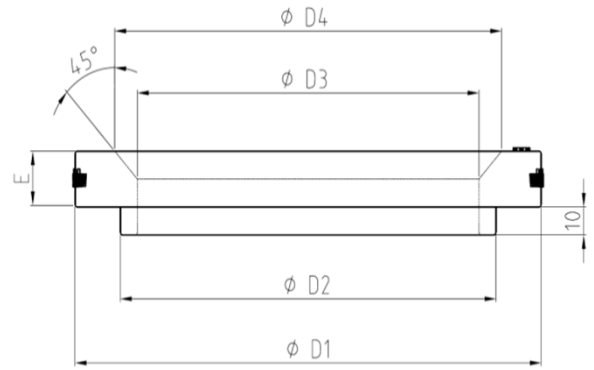


Fig. II : For Low capacity volume - 2

Item	Accumulator	Fig	Weight (Kg)	$\phi D1$	$\phi D2$	$\phi D3$	$\phi D4$	E
SR 90	BA 1 ~ 5	I	0.13	140	120	90	112	10
SR 151	BA 10~60	II	0.5	206	166	151	171	20

CHARGING KIT SPECIFICATION FOR ACCUMULATORS ACCUMULATOR용 충전기

CHARGING KIT FOR BLADDER ACCUMULATOR

Construction

Standard version includes :

- Valve body complete with ring nut connection to accumulator gas valve, pressure gauge, bleed and non return gas adaptor.
- 2.5m charging hose for high pressure series complete with bottle connections, or pressure reducer connection.
- Case

On request :

- Special adapter for special accumulators gas valves.
- Charging hose with length of 6m



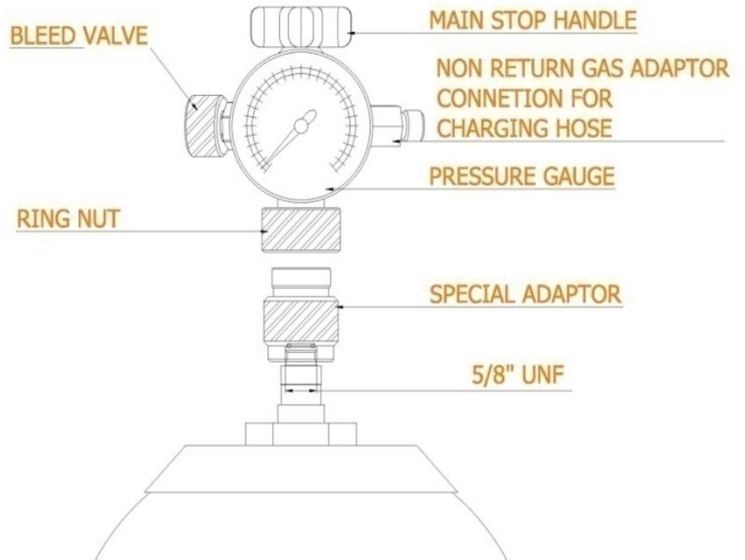
구조

표준품 포함 내역 :

- 가스충진기: accumulator 연결용 ring nut connection 압력계, bleed valve, non return gas adaptor
- 호스 : 2.5m
- 케이스

옵션사양 내역 :

- 타사 호환용 accumulator gas valve용 special adapter (Hydac, Olaer, EPE, Tobul 등)
- 6m 충전 호스



Technical data

Max working pressure	600bar
Accumulator connection	5/8" UNF – Standard 1/4" ISO 228 – Special adapter on request
Pressure gauge	Φ63 connection 1/4" ISO 228 Full scale 400 bar for high pressure accumulators Full scale 25ar for low pressure accumulators
Weight	2.5kg (Case included)

Ordering Code

CK – 400 – S – □

1 2 3 4

1	Type	CK
2	Pressure gauge	5 ~ 400 kg/cm ² (other spec' on request)
3	Connection to accumulator	S : 5/8" UNF(Standard) C : Special adapter for other accumulators
4	Charging hose	- : 2.5m (Standard) L : 6m (Option)

CHARGING KIT SPECIFICATION FOR ACCUMULATORS

ACCUMULATOR용 충전기

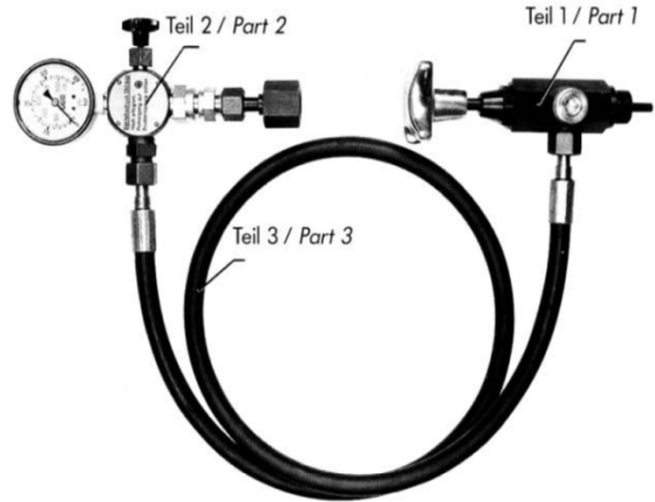
CHARGING AND TEST KIT(PN220/350) FOR PISTON ACCUMULATOR

CONSTRUCTION

Part 1. : Accumulator connector width across flats : 30, appr.215mm long, width hose connection and screw thread G 3/4.

Part 2. : With cylinder connection W24, 32 x 1 1/4" DIN 477
 Pressure gauge Φ63, quality class 1.6,
 Pressure discharge valve, Hose connection,
 Connection for gas safety valve.

Part3. : Hose DN6, 1500mm long
 (Special length on request)



구 조

Part 1. : 2.15mm 호수 연결용 G3/4" 나사,
 Accumulator connector(SW30)

Part 2. : 실린더 연결부 (32 x 1 1/4" DIN 477)
 Φ63 압력계(품질등급 1.6)
 압력 방출 밸브, 호수연결부, gas safety valve 연결부

Part 3. : 호스 DN6, 1500mm
 (특별한 사양에 대해 별도 청구)

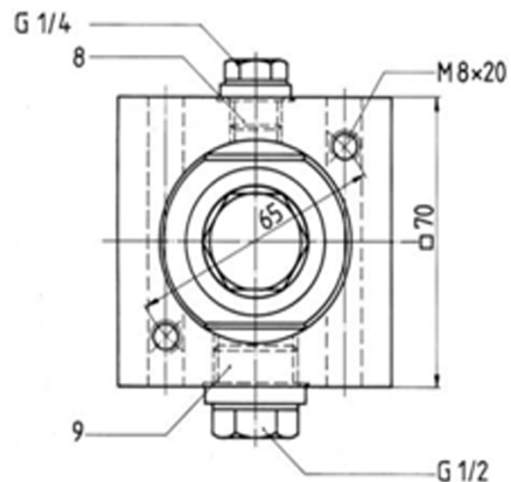
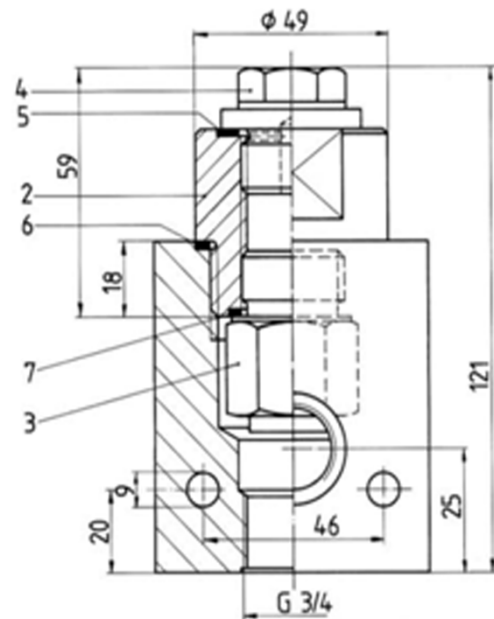
CHARGING AND TEST KIT(PN220/350)

Description

The adapter contains the gas filling and testing connector.
 It is connected to the piping between the FLUMA piston accumulator and the gas cylinder. There may be connected filling and testing kit.

설명

Adapter는 gas 충전 및 testing 연결을 포함한다. 이 제품은 가스실린더와 FLUMA piston accumulator사이를 배관은 연결한다. Filling / testing kit와 연결 될 것이다.



Adapter for piston accumulator

Pos.	Description – 설 명
1	Adapter complete
2	Screw-in part with RV
3	Gas non-return valve
4	Screw plug
5	U – seal ring
6	U – seal ring
7	Seal ring
8	Screw plug
9	Screw plug

Fluma Co., Ltd.



주식회사 플루마 Fluma Co., Ltd.

(우)50877 경상남도 김해시 주촌면 서부로1499번길22-60(주촌면)

Tel: 055-909-8129 Fax:055-909-8130

22-60, Seobu-ro 1499 beon-gil, Juchon-myeon,
Gimhae-si, Gyeongsangnam -do, Rep. of Korea

영업

심재문 대표

메일 : jmshim@fluma.co.kr, www.fluma.co.kr
전화 : +82 55 909 8129 / 팩스 : +82 55 909 8130
핸드폰 : +82 10 2561 8129

정현성 이사

메일 : hsjung@fluma.co.kr, www.fluma.co.kr
전화 : +82 55 909 8129 / 팩스 : +82 55 909 8130
핸드폰 : +82 10 9525 6263

Sales contact persons

Jae-mun, Shim / President,
E-mail : jmshim@fluma.co.kr, www.fluma.co.kr
Tel. : +82 55 909 8129 / Fax. : +82 55 909 8130
M.P : +82 10 2561 8129

Hyeon-sung, Jung / Director,
E-mail : hsjung@fluma.co.kr, www.fluma.co.kr
Tel. : +82 55 909 8129 / Fax. : +82 55 909 8130
M.P : +82 10 9525 6263